



AZEK® CLADDING



SHOWN: TIMBERTECH® VINTAGE MAHOGANY

Designed for Creativity—Engineered to Endure



# AZEK® CLADDING SYSTEM

## APPROVED FOR RESIDENTIAL AND COMMERCIAL

AZEK® PVC cladding offers a wide range of color options, multiple board widths and offers both tongue-and-groove (closed-joint) and square shoulder boards (open-joint). AZEK Capped Polymer Cladding is approved for commercial, residential and multi-family projects. With AZEK Cladding, you lock in exclusive application options for your uniquely beautiful design.

## RESIDENTIAL WARRANTIES

Developed from AZEK Exteriors' decades of industry experience and dedicated commitment to innovative materials science, AZEK Cladding is backed by industry-leading warranties for unrivaled performance.



## COMMERCIAL WARRANTIES

Bring the enduring beauty of AZEK Cladding to your commercial builds with the confidence guaranteed from durable, low-maintenance materials and industry-best performance.



AZEK Cladding delivers the full aesthetic experience of wood without the laborious, costly, and constant upkeep required with traditional lumber. Our one-of-a-kind capped polymer boards achieve a realistic wood look that lasts—that's why we back them with industry-leading warranties for both commercial and residential buildings. Enjoy design flexibility with a variety of color choices, different board profiles and board widths in our Timbertech® Vintage Collection®.



SHOWN: TIMBERTECH® VINTAGE CYPRESS®  
7.25" SQUARE SHOULDER BOARD

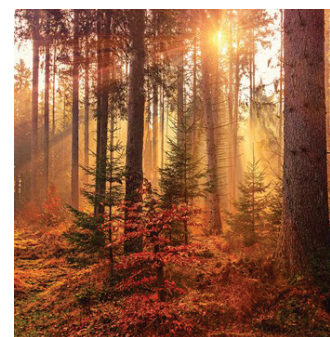
## BOLD. ELEGANT. TIMELESS.

Your design should capture the timeless beauty of an authentic wood look while delivering the innovative performance of capped polymer cladding. AZEK Cladding boards achieve the same natural aesthetics of wood—including highly sought-after hardwoods—thanks to nuanced color-blending, realistic wood grain patterns, and nature-inspired finishes. Unlike traditional wood, AZEK Cladding boards boast advanced performance for a low-maintenance, beautiful exterior design that lasts for years.

## HOW AZEK CLADDING DELIVERS ENDURING BEAUTY

- Premium, low-maintenance alternative to both traditional and exotic woods
- Square-shoulder (open-joint) and tongue-and-groove (closed-joint) board options
- No painting or sealing needed for protection
- Can be installed with Cortex® for a seamless, hidden-fastener finish
- unrivaled protection from mold, mildew, and moisture damage thanks to 4-sided capping
- Stain-, scratch-, and insect-resistant
- Moisture resistant
- Will not split, splinter, rot, or crack
- CCRR-0266 available for the Vintage® Collection.
- Lighter than most competitive products including exotic woods

## SUSTAINABLE CLADDING MATERIALS BY THE NUMBERS



### WE WOOD NEVER

Homeowners choosing AZEK® Cladding or TimberTech Decking over wood have helped save more than 1 million trees since 2015.



### WE GET SCRAPPY

Across the company, we diverted roughly 290 million pounds of waste from landfills in 2019. We also re-use 98% of internal scrap and are 97% landfill-free.



### PROOF IS IN THE WATER

Thanks to our closed-loop water filtration system, we recycle up to 96% of the water that our company uses each year.

**SHOWN: TIMBERTECH® VINTAGE DARK HICKORY  
7.25" SQUARE SHOULDER BOARD**

# TIMBERTECH VINTAGE® COLLECTION

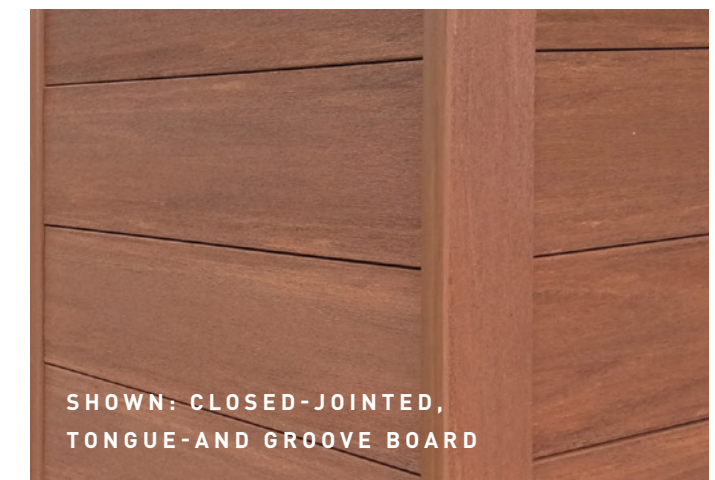
The Vintage Collection offers the widest range of sophisticated color palettes and unique board widths in the industry, promising prized design freedom and options to fit any home's style. Defined by natural-looking colors and a subtle wire-brushed, low-gloss finish, this elegant collection ensures a truly authentic wood look.



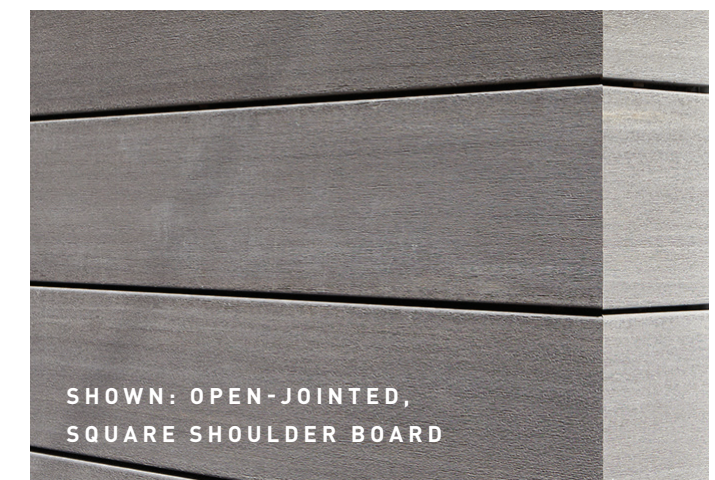
### CLASS A RATED FLAME SPREAD INDEX

The Vintage Collection® not only boasts gorgeous aesthetics to improve the value of your home, but a Class A Flame Spread Rating to protect that value.

SHOWN: TIMBERTECH® VINTAGE ENGLISH WALNUT  
7.25" SQUARE SHOULDER BOARD



SHOWN: CLOSED-JOINED,  
TONGUE-AND GROOVE BOARD



SHOWN: OPEN-JOINED,  
SQUARE SHOULDER BOARD



COASTLINE®



WEATHERED TEAK®



MAHOGANY



ENGLISH WALNUT®



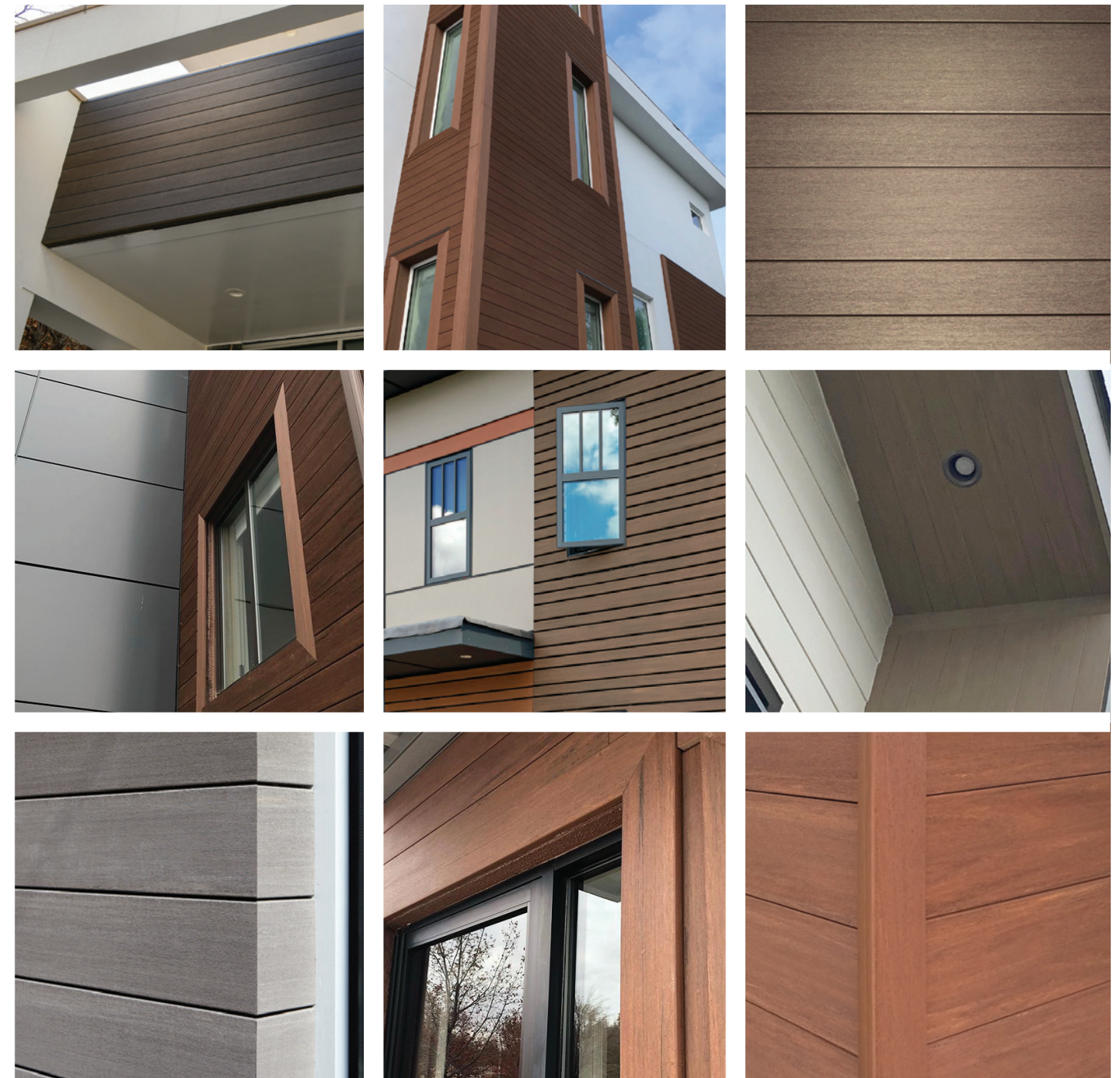
DARK HICKORY



CYPRESS®

## DESIGN'S THE LIMIT

With an unmatched portfolio of diverse colors, wood grain patterns, and board widths, the design potential with AZEK Cladding is nearly limitless. Moisture- and fade-resistant capped polymer technology, AZEK Cladding boards protect the integrity of your design vision for years to come. Build on the rich hues and textures of your AZEK Cladding application to highlight an entryway, add design detail to a porch ceiling, or as one element among mixed building materials for a clean, dimensional finish. When you choose AZEK Cladding, you choose the aesthetic beauty of wood with the unrivaled performance your design deserves.



SHOWN: TIMBERTECH® VINTAGE ENGLISH WALNUT  
7.25" SQUARE SHOULDER BOARD



TONGUE-AND-GROOVE

SQUARE-SHOULDER

## TECHNICAL DETAILS

TONGUE-AND-GROOVE	WIDE WIDTH 5 1/2"		STANDARD WIDTH 3 1/8"		
	12'	16'	10'	12'	16'
Standard Thickness 1"					
COASTLINE®	•	•		•	•
WEATHERED TEAK®	•	•		•	•
MAHOGANY	•	•		•	•
DARK HICKORY	•	•		•	•
MORADO®				•	•
BROWNSTONE			•	•	•
SLATE GRAY			•	•	•

The product applications depicted in this brochure are for display purposes only and not for the purpose of validating the sustainability, warrantability or safety of any particular installation, or application of the product.

SQUARE-SHOULDER	SQUARE SHOULDERED LENGTHS		
VINTAGE COLLECTION®	12'	16'	20'
Standard Thickness 1" Standard Width 5 1/2"		•	•
Standard Thickness 1" Narrow Width 3 1/2"	•	•	•
Standard Thickness 1" Wide Width 7 1/4"	•	•	•

The Timbertech Harvest Collection® and Arbor Collection® are also available for cladding installation. For more information talk to your local AZEK Representative or visit [www.azekexteriors.com/products/cladding](http://www.azekexteriors.com/products/cladding).

### CLOSED-JOINT CLADDING

Sometimes referred to as "closed-joint", tongue-and-groove boards interlock together with ease, creating a solid barrier with a neat, smoothly finished look without gaps.

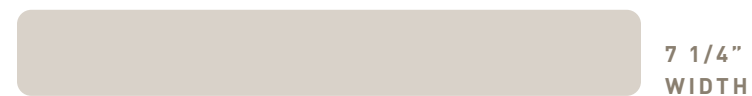
Tongue-and-Groove Board Sizes:



### OPEN-JOINT CLADDING

The open joints between the cladding elements create a strong, linear design pattern while also functionally providing ventilation for proper air circulation.

Square-Shoulder Boards Sizes:



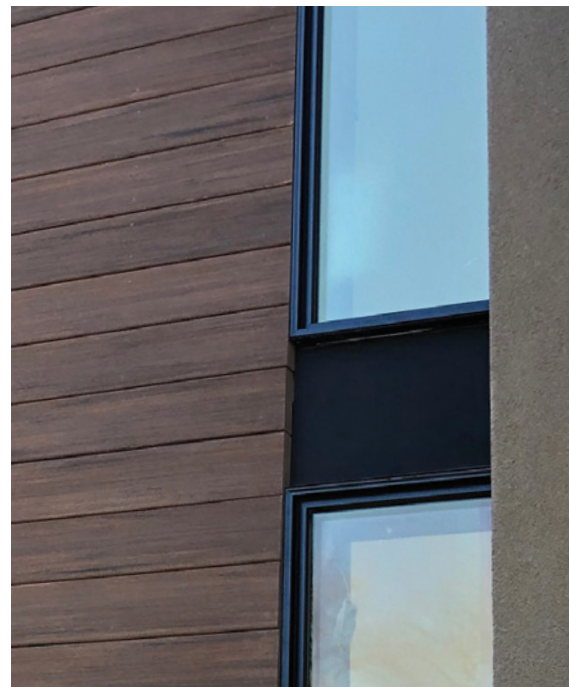
## CORTEX® FINISHING

Keep the focus on the warm, authentic wood aesthetics that complement the entirety of the exterior design and not on the installation method with the Cortex hidden fastening system. Defined by collated plugs made from actual AZEK Cladding boards and boasting pre-aligned grain patterns, Cortex promises the seamless, elegant finish your design needs.



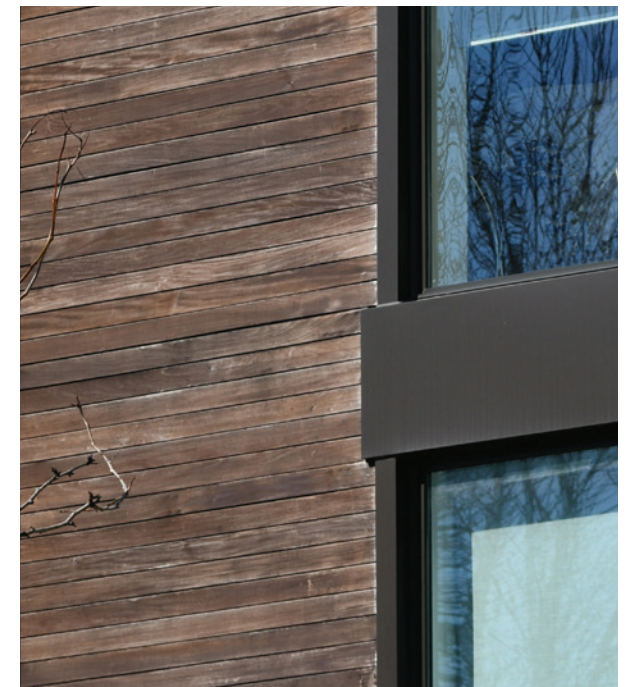
## SUPERIOR MATERIALS DELIVER BEAUTY THAT LASTS

Our one-of-a-kind capped polymer material was designed to deliver the most realistic wood look available, without additional staining or painting. Unlike traditional wood, AZEK withstands the elements without compromising on its color, texture, or structural integrity. That translates to a beautiful exterior finish without frequent upkeep or maintenance.



### AZEK CLADDING

Made completely of synthetic material, AZEK capped polymer boards stay impervious to moisture, mold and mildew while also combating the fading effects of UV rays. Backed by industry-leading warranties, AZEK Cladding delivers unrivaled design potential and integrity.

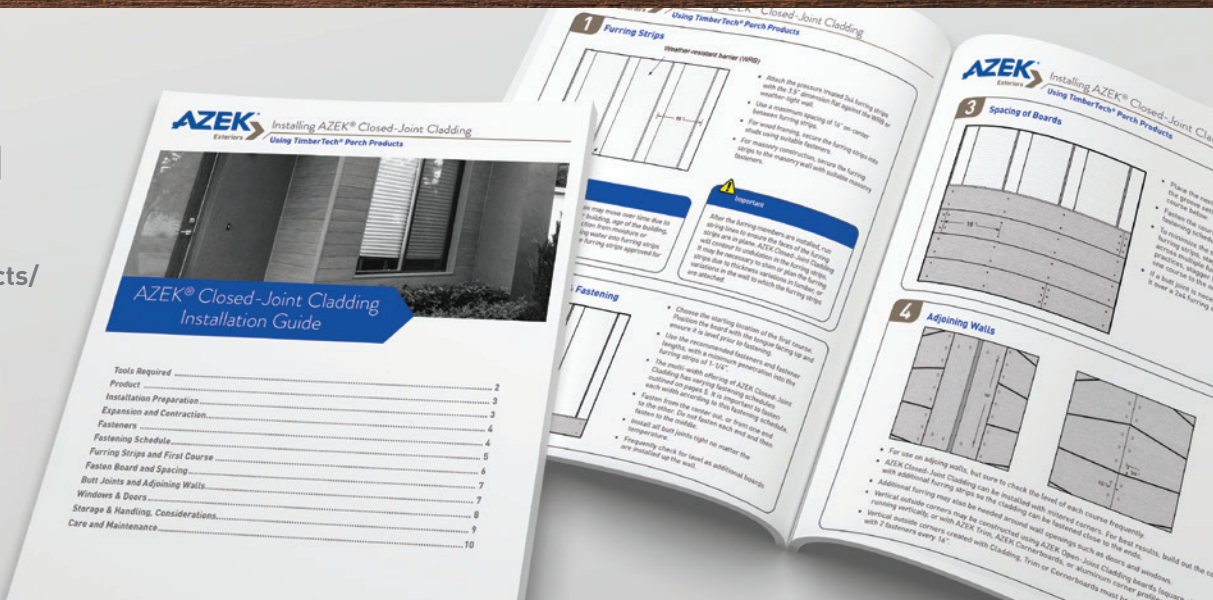


### STAINED WOOD EXPOSED FOR SEVEN YEARS

Constant exposure to the elements takes a toll on traditional wood cladding—even premium hardwoods like Ipe will fade to a worn gray color without regular and costly maintenance. Traditional woods can be treated with stains and coatings for additional protection, but will still experience splintering, fading, and dimensional changes.

DOWNLOAD  
INSTALLATION  
GUIDES AT:

[AZEKexteriors.com/products/cladding](http://AZEKexteriors.com/products/cladding)



## AZEK BIM LIBRARY

Designing with AZEK Revit content is easy – just browse our available products online at:

[AZEKexteriors.com/resources/bim-library](http://AZEKexteriors.com/resources/bim-library)

- Installation Guides
- CAD Drawings
- Architectural Specification
- Care and Maintenance
- Order FREE Samples
- BIMsmith Content

## AIA Continuing Education Provider

EARN AIA OR AAA CONTINUING EDUCATION CREDITS

Course Title: **Enduring Beauty: High Performing Open Jointed Cladding Systems**

[www.ronblank.com/Free\\_Courses/Enduring-Beauty-High](http://www.ronblank.com/Free_Courses/Enduring-Beauty-High)



MADE IN  
THE USA

AZEK BUILDING PRODUCTS

1330 W. Fulton Street, Suite 350 | Chicago, IL 60607

©2020 AZEK Building Products.

Homes shown on the cover

and page 4 Built by Corbelo LLC