

**TimberTech**

+

**loll**  
DESIGNS

OUTDOOR FURNITURE



**TimberTech**

+



A GREAT OUTDOOR SPACE DESERVES  
GREAT OUTDOOR FURNITURE.



TIMBERTECH + LOLL DESIGNS

*MAKES  
GREAT  
OUTDOOR  
FURNITURE.*

YOUR INVITATION TO

# THE INVITE COLLECTION

*TimberTech furniture enhances your outdoor life with comfort and style.*

*Like all TimberTech products, the focus is on beauty, longevity, and sustainability.*

*You can expect comfort, no special maintenance, and years and years of enjoyment.*

*Add in the innovative design from our partner Loll Designs and you have a furniture suite that makes you proud and serves you well.*

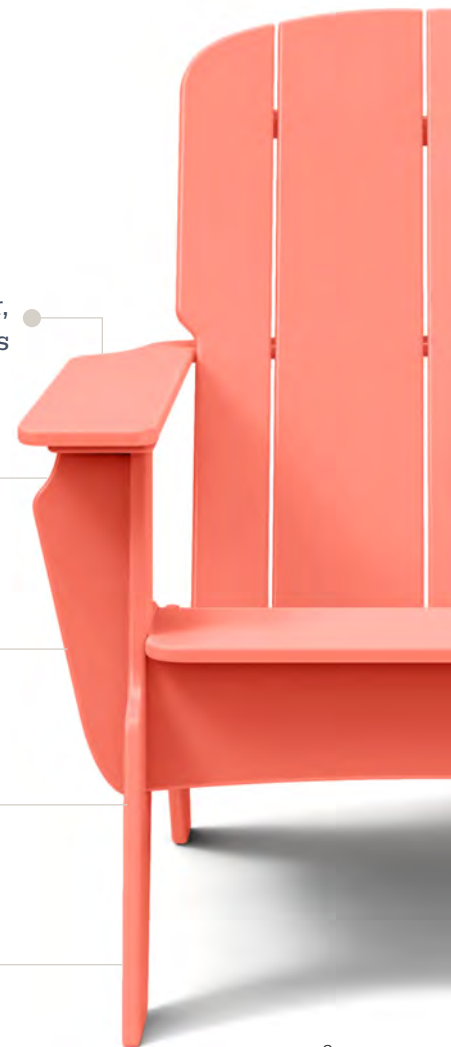
All seasons, all weather,  
goes with all styles

Maintenance free,  
easy-to-clean

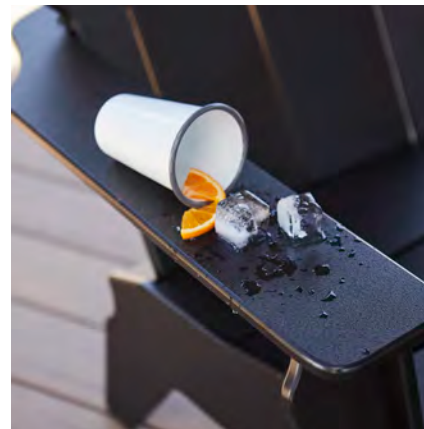
Heavyweight design.  
Heavy weight bearing

Minimum 25% post-  
consumer recycled

No exposed fasteners or  
splinters to snag on

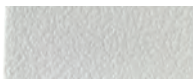


# THE ADIRONDACK CHAIR



The classic Adirondack form is stylishly improved for greater comfort, strength, and versatility. An elevated and gently angled seat makes getting in and out easier. It's relaxing without being nap-inducing. The front edge lets you sit and be engaged—whether eating, playing cards, or hopping up to chase the kids. Pebble grain finish provides a welcome tactile feel and no fear of splinters. Rock-solid and weighing 49 pounds, this chair will not go tumbling when summer storms or winter blizzards blow.

AVAILABLE IN:



CLOUD WHITE



BLACK



CANVAS



CORAL



STORM GRAY





## *ASIDE TABLE*

The Aside Table is the very definition of useful. At just the right height to serve a seated person, this table will let you empty your hands and lap of glassware, dishes, keys, phones and all the other stuff of modern life. Sophisticated design invokes classic Chippendale proportions and the form of a Roman arch. No wonder it looks at home anywhere, from Cape May to Miami, from Vail to the Valley. You'll never regret having one of these at your side, and you may be happier with two.

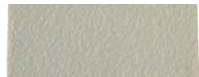
AVAILABLE IN:



CLOUD WHITE



BLACK



CANVAS



## CONVERSATION TABLE

The Conversation Table is built to take it. By “it” we mean un-coastered cold drinks, spills of Syrah, errant racks of ribs, and the general lack of care from toddlers, teenagers, or twenty-somethings. Like all TimberTech products, it’s built to last, ridiculously strong, and pleasantly handsome—a perfect complement to our collection and your outdoor space. A soap and water cleanup has it looking like new—after its first party of its fiftieth.



CORAL



STORM GRAY

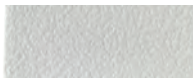




## *MINGLE BENCH*

The Mingle Bench shares the principal design elements of our Adirondack chair, but in a two-seat version. Comfort abounds—for one, two, or a swarm of kids. You'll also feel good about its use of post-consumer recycled content. Longevity is built in, thanks to TimberTech advanced materials and smart engineering and design. Painting, sealing, and refinishing are totally unnecessary and cleanup is as simple as a hose and a brush. Concealed stainless steel fasteners won't snag summer linens or winter woolens.

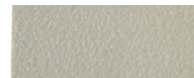
AVAILABLE IN:



CLOUD WHITE



BLACK



CANVAS



CORAL



STORM GRAY



## THE INVITE COLLECTION

# DETAILS

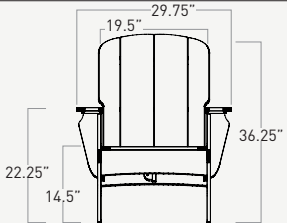
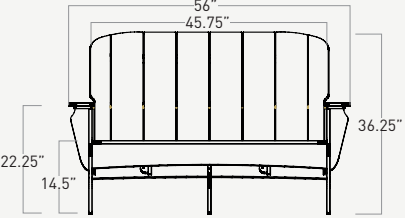
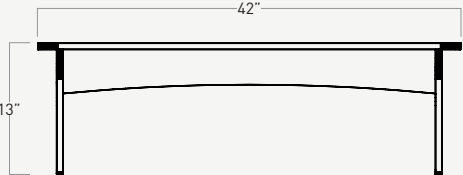
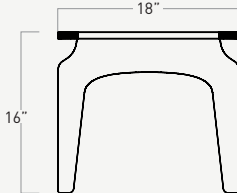
- Incredibly comfortable
- Wind, weather, water, and wine-resistant
- Practical design for any setting: looks + efficacy
- Made in the USA. Proudly.
- Dependably durable. Buy in this decade, enjoy it for decades to come.
- All-over pebble grain texture for a great tactile experience
- Spills happen. Washes up with soap and water.
- 20 year residential warranty (on all HDPE parts)
- 5 year commercial warranty
- 5 year fade-and-stain warranty
- Solid HDPE (vs. competitor's filled or foamed lumber)

All pieces in the collection are available in any of the five colors shown here. Color is 100% saturated through the material and UV-protected for resistance to sun fading.

Contact **1.877.275.2935** to order your furniture set or visit **[TimberTech.com/Products/Furniture](https://www.timbertech.com/Products/Furniture)** to learn more



CLOUD WHITE / BLACK / CANVAS / CORAL / STORM GRAY

PRODUCT	COLORS	ITEM # (SKUS)	DIMENSIONS (in)	WEIGHT (pounds)
LOUNGE ADIRONDACK 	Cloud White Black Canvas Coral Storm Gray	TTLIADCH-CLW TTLIADCH-BLK TTLIADCH-CNV TTLIADCH-CRL TTLIADCH-STM	37" deep 29.75" wide (total) 19.5" wide (seat) 36.25" high	49 lbs
MINGLE BENCH 	Cloud White Black Canvas Coral Storm Gray	TTLIMGBN-CLW TTLIMGBN-BLK TTLIMGBN-CNV TTLIMGBN-CRL TTLIMGBN-STM	37" deep 56" wide (total) 45.75" wide (seat) 36.25" high	109.5 lbs
CONVERSATION TABLE 	Cloud White Black Canvas Coral Storm Gray	TTLICVTB-CLW TTLICVTB-BLK TTLICVTB-CNV TTLICVTB-CRL TTLICVTB-STM	20" deep 42" wide 13" high	38 lbs
ASIDE TABLE 	Cloud White Black Canvas Coral Storm Gray	TTLIASTB-CLW TTLIASTB-BLK TTLIASTB-CNV TTLIASTB-CRL TTLIASTB-STM	18" deep 18" wide 16" high	16 lbs

furniture drawings not to scale



LEARN MORE AT  
[TimberTech.com/  
Products/Furniture/](https://www.timbertech.com/Products/Furniture/)

**TimberTech**



1330 W. FULTON MARKET  
CHICAGO, IL 60607  
1.877.275.2935

REV: 8/22